

## Who is CPS Energy?

Established in 1860, CPS Energy is the nation's largest community-owned provider of electric and natural gas services. We provide safe, reliable, and competitively priced services to **930,114** electric and **381,379** natural gas customers in San Antonio and portions of seven adjoining counties. Our customers' combined energy bills rank among the lowest of the nation's 20 largest cities while generating \$9 billion in revenue for the City of San Antonio over the last 80 years.

Our Vision 2027 strategic plan is designed to guide CPS Energy through rapid transformational change in our city. As a trusted and reliable community partner, we continuously focus on job creation, economic development, and educational investment. We are powered by our skilled workforce, whose commitment to the community is demonstrated through our employees' volunteerism, our community engagement efforts and programs aimed at bringing value and assistance to our customers.



**Typical Substation**

## How can you follow the progress of this project?

The CPS Energy project team will post project information on the CPS Energy website at [cpsenergy.com/infrastructure](http://cpsenergy.com/infrastructure).

## Who can answer your questions?

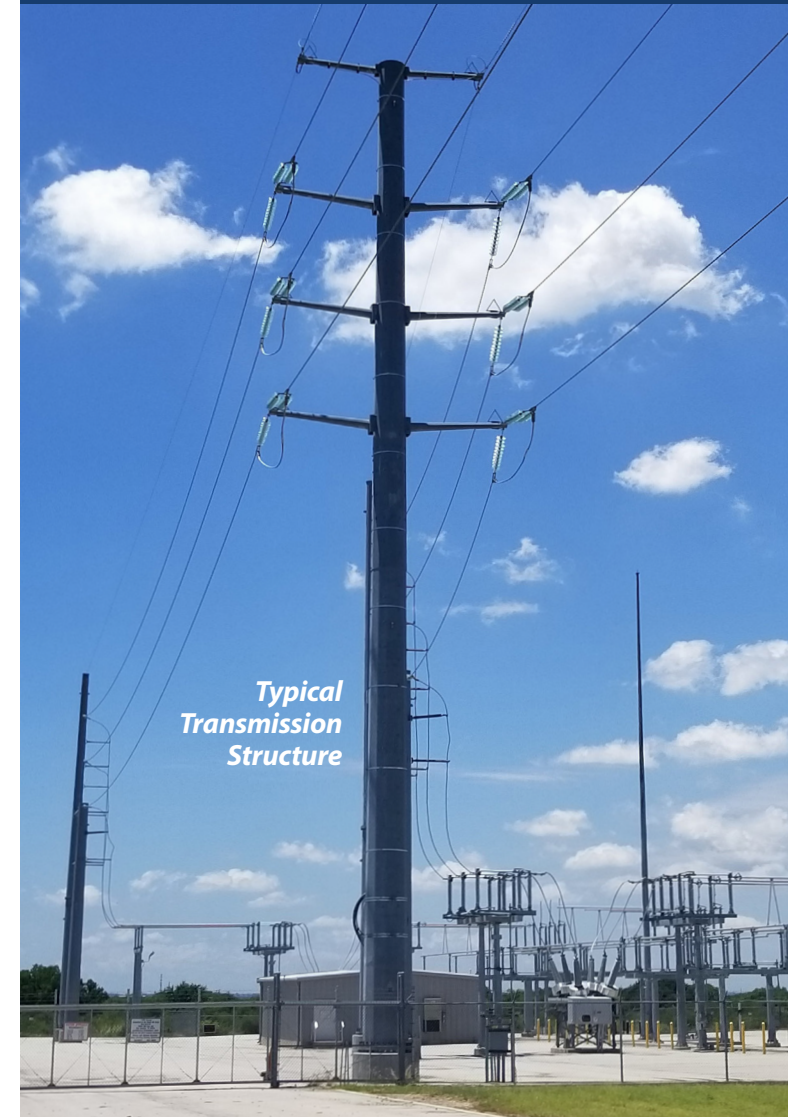
The website will include regular updates on the project as steps are completed. If you have questions about the project, please call, write or email:

### CPS Energy

Antonio DeMendonca, MBA, PMP  
EDS Project Manager II  
Ingram Rd. Substation Project  
Mail Code RT0801  
500 McCullough Ave.,  
San Antonio, TX 78215  
(210) 353-5318  
[ademendonca@cpsenergy.com](mailto:ademendonca@cpsenergy.com)



# INGRAM RD. SUBSTATION & TRANSMISSION PROJECT



*Typical  
Transmission  
Structure*

# INFORMATION ABOUT THE INGRAM RD. SUBSTATION & TRANSMISSION PROJECT

## **What is the Ingram Rd. Substation & Transmission Project?**

CPS Energy is planning to construct a new electric substation and high-voltage transmission line at the intersection of Ingram Rd. and Potranco Rd. (1495 Ingram Rd.).

A substation is a local power hub or distribution point for electricity. The substation will be supplied from a new extension of an existing high-voltage transmission line within the area shown on the map.

### **How might this project affect you?**

Our contractor will work to minimize impact to area residents. Construction of the substation is tentatively scheduled to begin in October 2023 and be completed in November 2025. We would like to thank you in advance for your patience and understanding as we work to continue delivering dependable, affordable energy to our customers.

### **Why is this project needed?**

This substation is needed to provide electric service to a large business in the area. The required electric capacity is greater than what can be supported by the existing electrical infrastructure. In addition, this substation is designed to also support future growth in the area.

## **Project Location Map**

