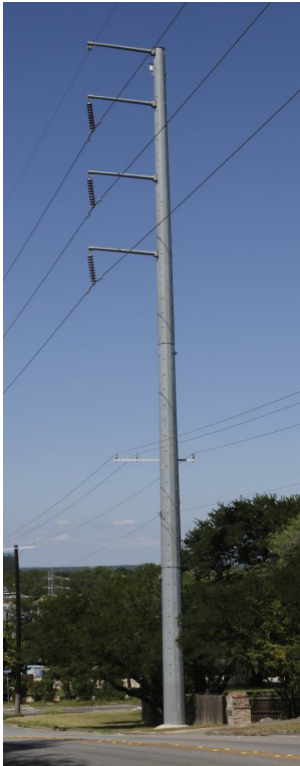


Who is CPS Energy?

Established in 1860, CPS Energy is the nation's largest community-owned provider of electric and natural gas services. We provide safe, reliable, and competitively priced services to **907,526** electric and **373,998** natural gas customers in San Antonio and portions of seven adjoining counties. Our customers' combined energy bills rank among the lowest of the nation's 20 largest cities while generating \$9 billion in revenue for the City of San Antonio over the last 80 years.

Our Vision 2027 strategic plan is designed to guide CPS Energy through rapid transformational change in our city. As a trusted and reliable community partner, we continuously focus on job creation, economic development, and educational investment.

We are powered by our skilled workforce, whose commitment to the community is demonstrated through our employees' volunteerism, our community engagement efforts and programs aimed at bringing value and assistance to our customers.



How can you follow the progress of this project?

The CPS Energy project team will post project information on the CPS Energy website at cpsenergy.com/infrastructure.

Who can answer your questions?

The website will include regular updates on the project as steps are completed.

Also, you may write, call or email to:

CPS Energy

Daniel Otto, S&T Regulatory Support Manager
SAT15 Substation and Transmission Line Project

Mail Code RT0801

500 McCullough Ave.

San Antonio, Texas 78215

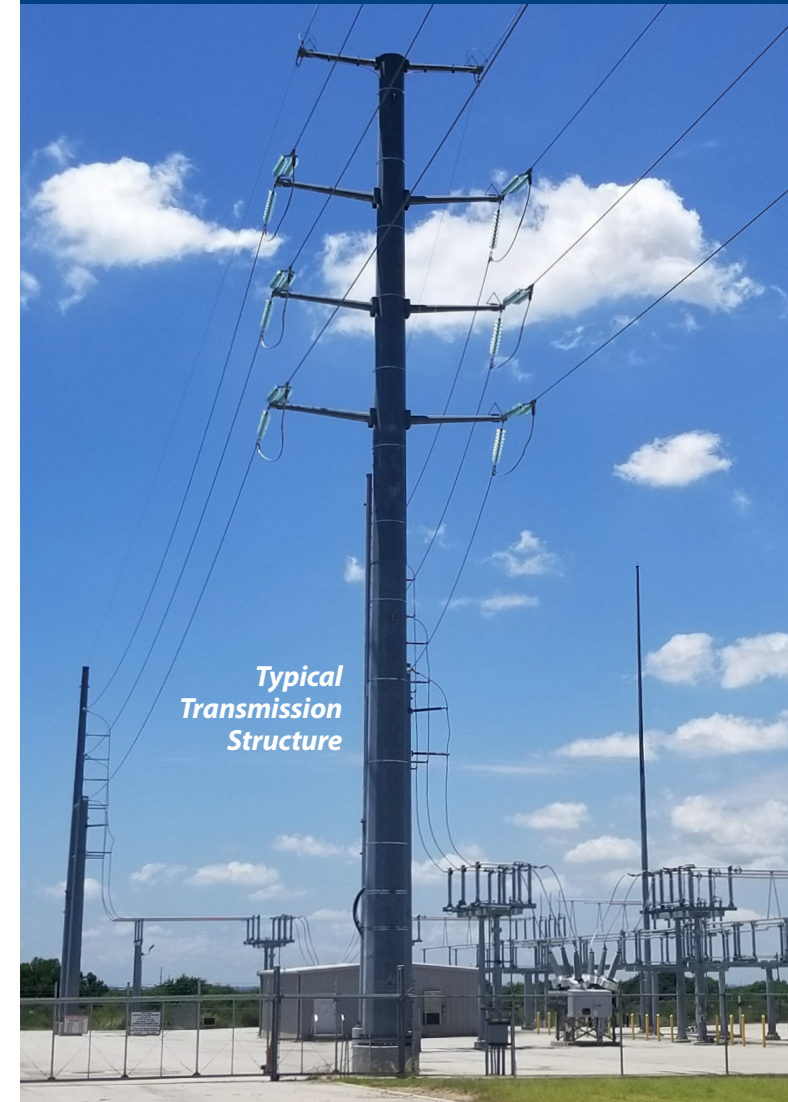
(210) 353-2515

SAT15Project@cpsenergy.com



SAT15

SUBSTATION AND TRANSMISSION LINE PROJECT



*Typical
Transmission
Structure*

