

Who is CPS Energy?

CPS Energy is the nation's largest municipally owned natural gas and electric company, providing service to 741,000 electric and 331,000 natural gas customers in the Greater San Antonio area. The company offers the lowest rates among the top 10 largest U.S. cities, while ranking number one in wind-energy capacity among municipally owned energy systems and number one in Texas for solar generation.

CPS Energy's goal is to provide reliable energy in an environmentally responsible way. This brochure is a first step in notifying the public of this project in an effort to work together to achieve that goal. If outages are necessary or the scope of the project changes, the public will be notified via letter and/or door hanger. If you have any questions regarding the project please contact Kevin Phillips.

How can I follow the progress of this project?

The CPS Energy project team will post project information on the CPS Energy website at www.cpsenergy.com.

(search Tenth)

Who can answer my questions?

The website will include regular updates on the project as steps are completed. Also, you may call, write or e-mail to:

CPS Energy

Kevin Phillips, Project Manager

Coliseum to Tenth Street Transmission Line
Rebuild Project

Mail Code 111008

P.O. Box 1771

San Antonio, Texas 78296-1771

(210) 353-3114

ktphillips@cpsenergy.com



works for you

Coliseum - Tenth Street TRANSMISSION LINE REBUILD PROJECT



works for you

INFORMATION ABOUT THE COLISEUM—TENTH STREET TRANSMISSION LINE REBUILD PROJECT

What is the Coliseum to Tenth Street

Transmission Line Rebuild Project?

CPS Energy is planning to rebuild an existing single circuit 138 kV transmission line between the Coliseum and Tenth Street substations. The transmission line route will be approximately 3 miles long and begins at the existing Tenth Street Substation near Tenth Street and IH 37 and proceeds east on Lamar Street turns south on Mesquite Street turns east on Burnet Street, turns north on Grimes Street and turns southeast on Larry Street into Coliseum Substation.

The project will involve a complete rebuild of the transmission line including foundations, transmission structures (poles) and electrical wires. CPS Energy plans to replace the transmission line along the existing route. However, there will be a change in the type of structures. The existing lattice (webbed) structures will be replaced with steel poles.

The project is scheduled for completion in June 2015.

How might this project affect you?

As with most projects, construction activities will impact residents in different ways. CPS Energy construction activities will be focused around the proposed highlighted areas.

Activities that may be typical to the entire construction project will be the presence of construction equipment and materials as well as temporary partial road closures while construction is in progress.

Why is this project needed?

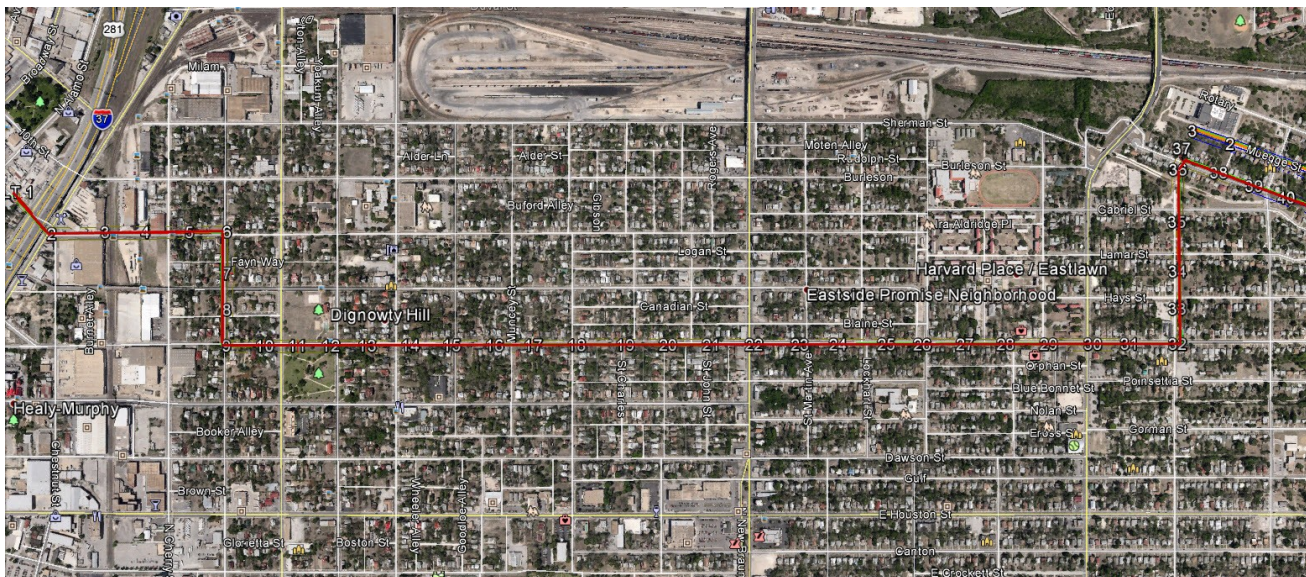
The existing CPS Energy electric system must be maintained to serve customers' needs for reliable electric power. This project will improve the quality and safety of an aging transmission line and help ensure electric reliability between the Coliseum, Ft. Sam, Holbrook and Kirby substations.

Examples of Transmission Structures



Steel Pole Structure

Project Location Map



Lattice Structure