

Residential Overhead with Service Mast

Service entrance  
Conductors size and type?  
(from weatherhead to meter)

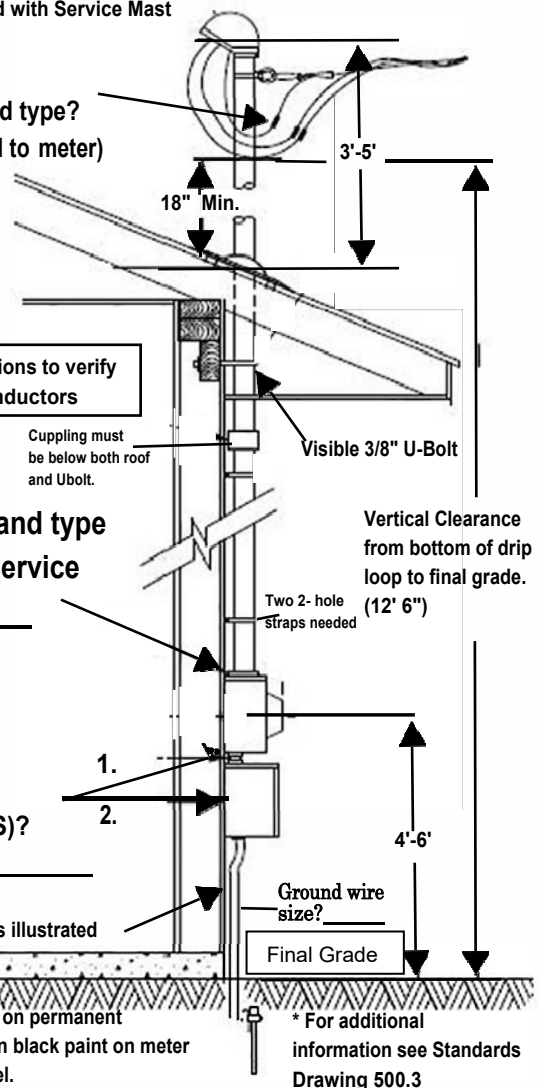
\*Provide load calculations to verify  
service entrance conductors

Conductor size and type  
from meter to service  
panel? \_\_\_\_\_

Size of electrical  
equipment (AMPS)?  
1. \_\_\_\_\_ 2. \_\_\_\_\_

Ensure grounding is illustrated

\*Ensure full address is on permanent  
structure or stenciled in black paint on meter  
can or disconnect panel.



\* For additional  
information see Standards  
Drawing 500.3