

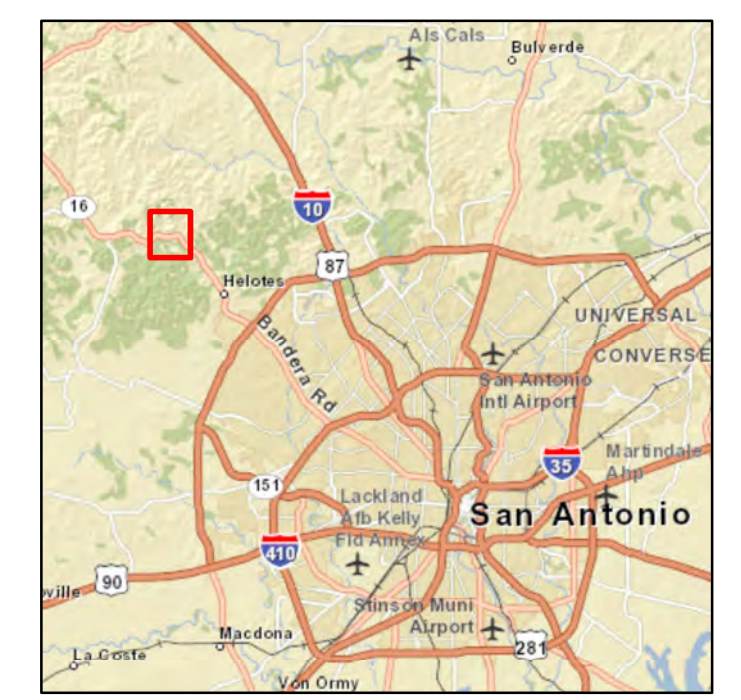
Figure 2-1
LAND USE AND ENVIRONMENTAL CONSTRAINTS

RANCHTOWN SUBSTATION PROJECT

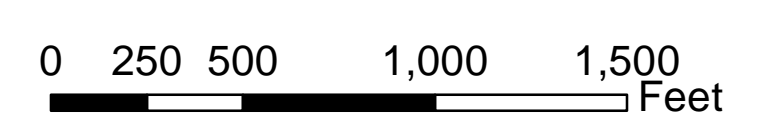
Van Raub and Helotes Quadrangles
Bexar County, Texas



- Zone 1 = Areas known to contain endangered karst invertebrate features.
- Zone 2 = Areas having a high probability of containing suitable habitat for endangered karst invertebrate species.
- Zone 3 = Areas that probably do not contain endangered karst invertebrate species.
- Zone 4 = Areas that require further research but are generally equivalent to Zone 3, although they may include sections that could be classified as Zone 2 or Zone 5 as more information becomes available.



Vicinity Map



ATKINS

Microsoft Corporation, DigitalGlobe, Bing Maps Aerial, 2010, 1:6,000; generated by Grant Cox; using ArcMap, <http://www.bing.com/maps> (22 May 2012)
Revised: 7/26/2012