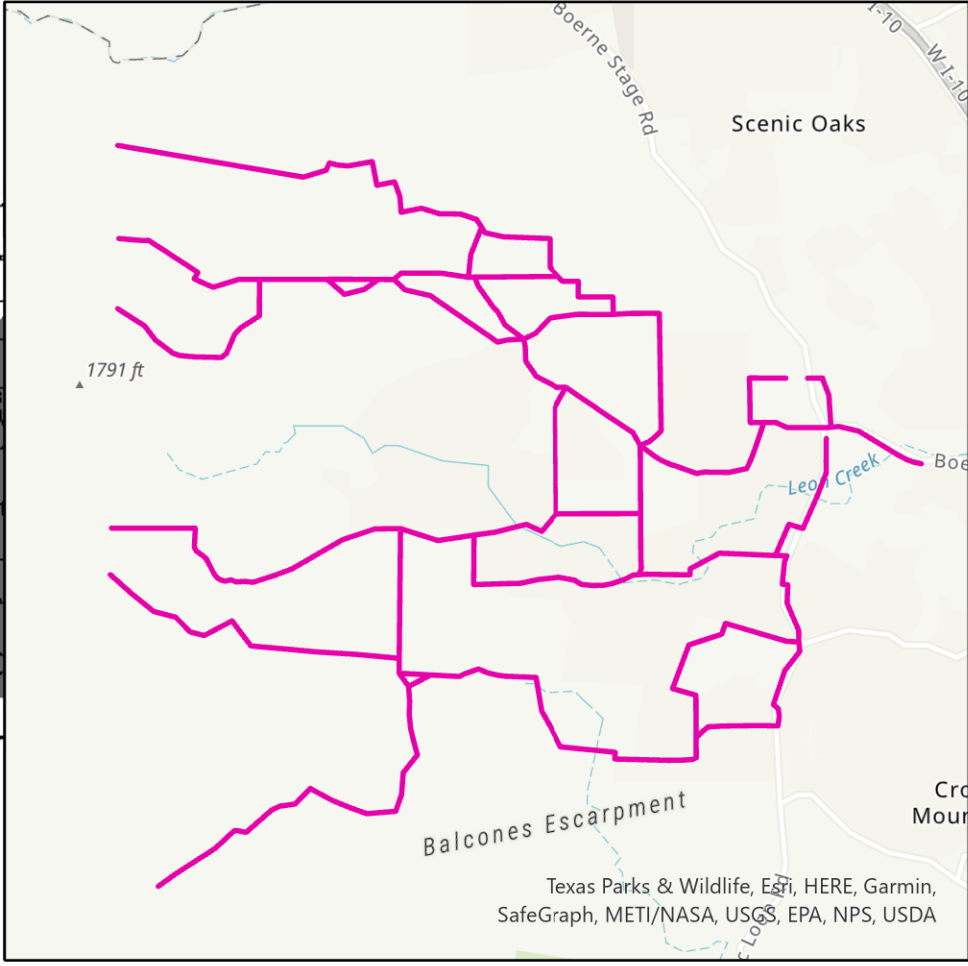
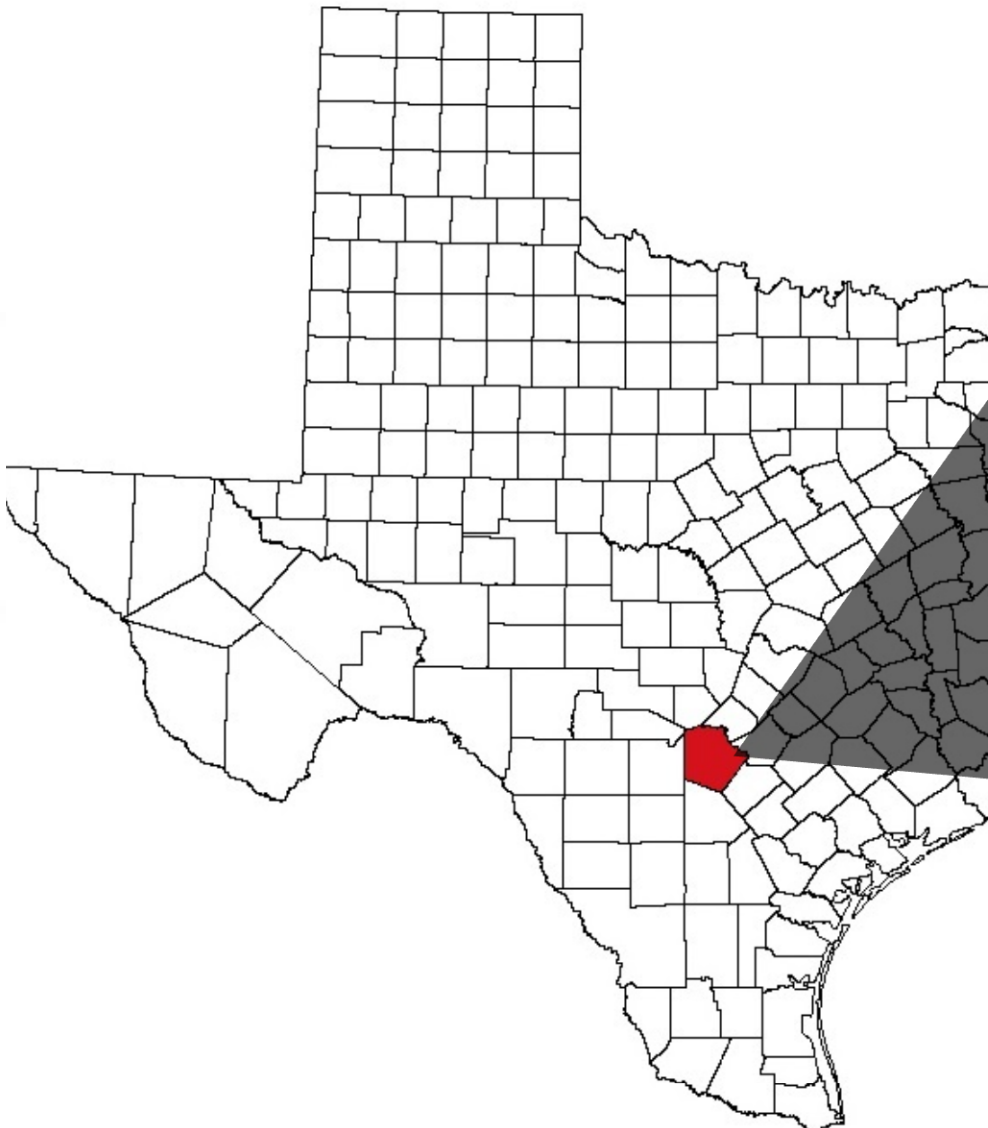
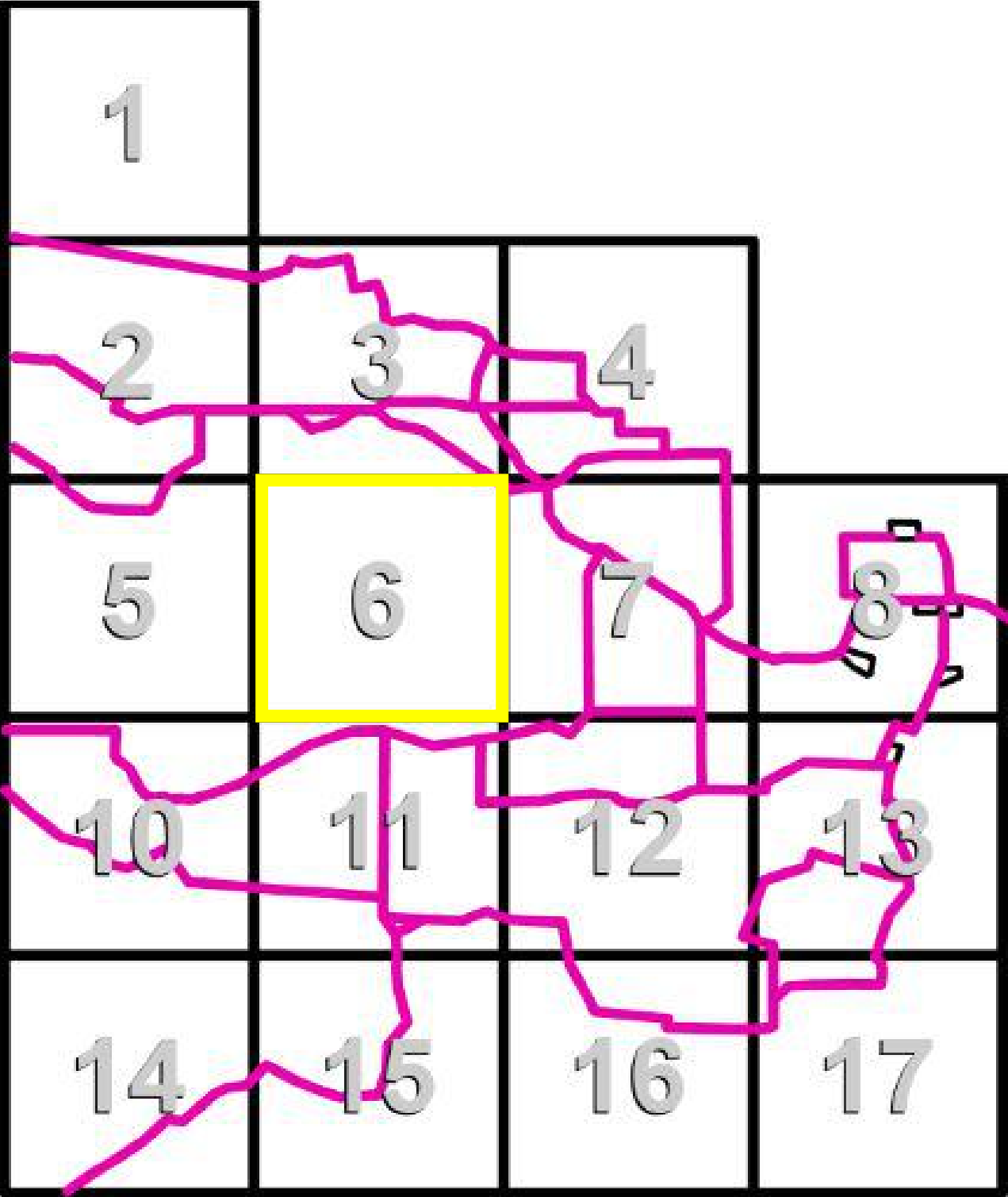


Imagery Date: 01.2019



CPS Energy is the nation's largest municipally owned energy utility providing both natural gas and electric service. We serve more than 840,750 electric customers and 352,585 natural gas customers in and around San Antonio, the nation's seventh largest city. This map has been produced by CPS Energy for its own use. Accordingly, certain information, features or details may have been emphasized over others or may have been left out. CPS Energy does not warrant the accuracy of this map, either as to scale, accuracy or completeness.

Prepared by Refined Land Services.
07.06.2020
Rev. 12.21.2020



LEGEND

- SEGMENTS
- HABITABLE STRUCTURES
- SUBSTATION
- PROJECT NODE
- PARCEL BOUNDARIES
- LANDHOOKS

Scenic Loop

138kv Electric Transmission Project

Location of Directly Affected Parcels and Habitable Structures

0 0.08 0.15 Miles

N