

QUARTERLY CHECK-IN





POLE ATTACHMENT SERVICES QUARTERLY WORKSHOP

PRESENTED BY:
Pole Attachment Services Dept.

04 DEC 2025



SAFETY



Almost half of the home decoration fires in December are started by candles.



Think about using **battery-operated flameless candles**.



Christmas is the peak day for candle fires.



Keep candles at least **12 inches** away from anything that burns.



A dry Christmas tree can burn very hot and very fast.



More than 1 in every 5 Christmas tree fires were caused by a heat source too close to the tree.



Read manufacturer's instructions for the number of light strands to connect.



Make sure your tree is **at least 3 feet away** from heat sources like fireplaces, radiators, space heaters, candles or heat vents. Also, make sure your tree does not block exits.



Get rid of your tree after Christmas or when it is dry.

AGENDA

- Safety
- Utility Network GIS User Forum
- General Topics
- Applications
- Designer Responsibilities
- Violation Tickets
- Additional Items



UTILITY NETWORK GIS USER FORUM

Pole Attachment Services


- What is the Utility Network Project?
- What Does the Utility Network Mean for You?
- Project Roadmap
- Questions / Discussion



WHAT IS THE UTILITY NETWORK?

- Our current GIS system is being replaced with a modern Utility Network (UN) platform.

Representative functionality can include:

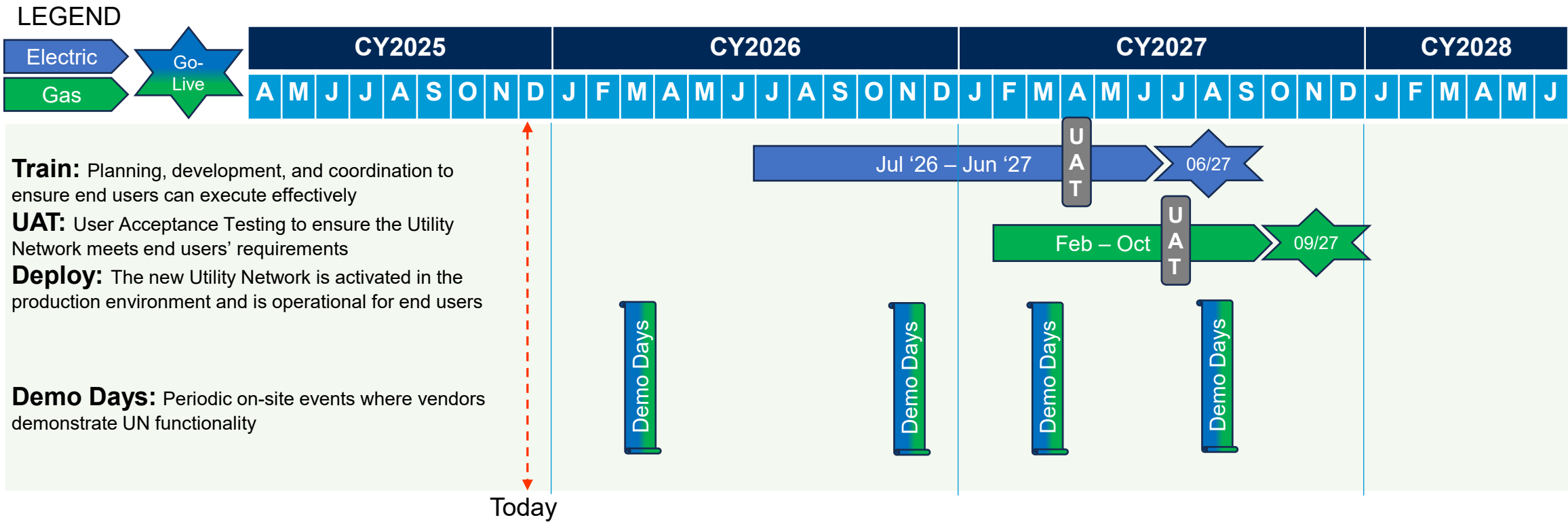
- Support pole inspections and attachments with faster, more accurate data entry
 - Crews can capture details, photos, and records directly in the field with improved mobile tools
 - Data accuracy and safety can improve, helping crews to quickly identify pole conditions, track attachments, and support compliance requirements
- 
- The image shows a utility worker in profile, wearing a white hard hat and a high-visibility green vest. They are holding a tablet or smartphone and looking at the screen. In the background, there are several tall metal power line towers and power lines stretching across the sky. The scene is set during sunset or sunrise, with a warm orange glow. A watermark 'gettyimages' and 'Credit: onuma Inthapong' are visible in the center of the image. A small number '1885792983' is in the bottom left corner of the image.
- By adopting the UN, your work directly contributes to building the “**grid of the future**” – a smarter, more reliable system that benefits both CPS Energy and the communities we serve.

WHAT DOES THE UTILITY NETWORK MEAN FOR YOU?

- Streamlined workflows by accurately linking pole, attachment, and inspection data
- Key benefits include:
 - ✓ Better integration between field tools and office systems
 - ✓ Accurate asset inventory so every pole and attachment is tracked and up to date
 - ✓ Simplified audits with less paperwork and faster reporting
 - ✓ Enforced data integrity to ensure consistent, trusted records
- Better Record Management: Crews log pole conditions, attachment details, and inspection results directly into GIS. This eliminates duplicate entries, ensures records are always current.



UTILITY NETWORK PROJECT ROADMAP



QUESTIONS

DISCUSSION



If you have any questions or would like any additional information, please contact:

- arwagner@cpsenergy.com
- rbest@cpsenergy.com, or
- dpdisera@CPSEnergy.com



GENERAL TOPICS

- Victoria Ramirez is an Engineering Associate 1 in Pole Attachment Services; she started with CPS Energy in September 2025
- Prior to joining CPS Energy, Victoria has previous experience in the water sector as an engineer



DEPARTMENT EMAILS

- PAS Team
 - wsmeathers@cpsenergy.com
 - jvortega@cpsenergy.com
 - ralanis@cpsenergy.com
 - vramirez@cpsenergy.com
- General Questions
 - poleattach@cpsenergy.com
- Pole Applications Mailbox
 - poleapplications@cpsenergy.com
- Bandit Signs
 - banditsigns@cpsenergy.com
- Post Construction Inspection
 - PCInspection@CPSenergy.com



Bandit Signs

- Upcoming Meetings/Workshop
- Previous Presentations
- Pole Attachment Standards
- Rate Calculations
- Agreements
- Approved Contractors
- Forms

Pole Attachment Services

CPS Energy Pole Attachment Program

CPS Energy's distribution system can facilitate the delivery of the variety of communication services offered today.

With a streamlined pole attachment process, we're dedicated to partnering with companies to assist with speed-to-market processes for future technologies.

CPS Energy's Pole Attachment Services Office is the single point of contact for all who wish to attach infrastructure to our distribution poles.

The Pole Attachment Services Office is responsible for:

- Registration
- Attachment agreements
- Applications for new pole attachments or removals
- Surveys of existing attachments
- Billing and collections for all the above services

For questions or more information on the pole attachment process, [SEND US AN EMAIL](#).

CPS Energy has released the revised Pole Attachment Standards Version 6.0 (the "Standards") and the Joint Trench Agreement Friday, August 12, 2022, which include the integration of more detailed procedures for the underground relocation projects. CPS Energy continues to work with stakeholders to ensure the adoption of best practices in the Standards to further streamline our processes and operations for the benefit of all attaching entities. Thank you for your consideration and patience.



Subscribe to receive email updates:

If you would like to receive emails regarding CPS Energy's Pole Attachment Program, please click on the button below to register your contact information.

[Register Contact Info Here](#)

Upcoming Meetings/Workshops

- Quarterly Pole Attachment Workshop: Dec 4, 2025

Previous Meetings/Workshops

Pole Attachment Standards

- ▶ [Pole Attachment Standards - V6.0 - Effective August 12 2022](#)
- ▶ [Pole Attachment Standards - V5 - Effective January 8 2021](#)
- ▶ [Pole Attachment Standards - V4 - Effective Apr 1 2019](#)

Helpful Links

- ▶ [Certificate of Authority \(City of San Antonio\)](#)
- ▶ [NJUNS](#)
- ▶ [Approved Contractors](#)
- ▶ [Exhibit A - Compensation Schedule](#)

APPROVED CONTRACTORS



Approved Pole Attachment Contractors



Engineering	Electrical Distribution Construction	One-Touch Transfer Construction	Vegetation Management
<div>ADB ★★ ★</div> <div>Aeparmia ★</div> <div>AWE, LLC ★</div> <div>Binkley & Barfield ★★ ★</div> <div>Black & McDonald ★★ ★</div> <div>Byers Engineering ★</div> <div>Cobb Fendley ★★ ★</div> <div>Millenium/DeBauche ★</div> <div>ENTRUST ★★ ★</div> <div>Halff ★★ ★</div> <div>LJA Telecom ★★ ★</div> <div>Merrick & Company ★★ ★</div> <div>Mountain, LTD. ★★ ★</div> <div>Orbital Engineering ★</div> <div>Quanta Utility Eng. Services ★★ ★</div> <div>SEG Engineering ★★ ★</div> <div>Surveying & Mapping, LLC ★★ ★</div> <div>TDC2, LLC ★</div> <div>TechServ ★★ ★</div> <div>Telecom Staffing, LLC ★★ ★</div> <div>TexasPro Engineering ★★ ★</div> <div>TOP Engineers + ★★ ★</div> <div>Tower Engineering Prof., Inc. ★★ ★</div> <div>TRC, Inc. ★★ ★</div> <div>Utility.Engineering ★★ ★</div>	<div>Chain Electric</div> <div>Pike Electric</div> <div>Greenstone</div> <div>Source Power</div>	<div>BComm Constructors, LLC</div> <div>Ervin Cable Construction, LLC</div> <div>Quest Utility Construction, Inc.</div> <div>S&S Cable Communications</div> <div>Tero Technologies Inc.</div> <div>TEXSTAR Enterprises, Inc.</div> <div>TX Superior Communications, LLC</div> <div>JC Communications</div> <div>ADB Companies</div> <div>A2 Total Telecom Services LLC</div> <div>B Robinson Inc.</div> <div>CJ Hood Communications</div> <div>US Aerial</div> <div>HMI Utilities</div> <div>Global Optics</div>	<div>Asplundh Tree Expert</div> <div>Davey Tree Surgery</div> <div>McCoy Tree Surgery</div>

★ Option 1: Pole Loading Analysis (PLA) & Application submittal

★★ Option 2: Make ready engineering

★★★ Option 3: Pole Loading Analysis (PLA), Application submittal & Make ready engineering

- The PAS team periodically identifies firms that have not submitted applications & then will remove them from the Approved Engineering Firms list
- It takes 90 days for individual credentials to expire
 - The firms removed had been inactive for much longer
- Firms will need to re-apply to become approved, going through the entire approval process as if it were the first time

- Future Trainings – Please submit the name & company to get on the list for the next available training (TBD)
 - Date: TBD (working on scheduling) with training for availability
 - Next class is @ capacity, continue to submit for future training sessions
 - Duration: 5 days Mon – Fri
 - Location: Virtual
- For more information, please email poleattach@cpsenergy.com
- The maximum class size is 6 & the minimum is 3
- **You will receive a set-up walkthrough from the GIS team that needs to be completed prior to the course starting**

- GIS training **DOES NOT** cover:
 - Pole Attachment Standards
 - Distribution Standards and Specifications
 - Pole Attachment Process
 - **Replace Design Training**
- GIS Training **DOES** cover basic GIS design training to submit EMR designs which include:
 - Transformers, Streetlights Etc.
 - Pole change outs (PCO)
 - Setting mid-span poles

CPS Energy led GIS training isn't a replacement for design training

PAS GIS TRAINING CLASSES

POLE APPLICATION PROCESS

Engineering Firms should:

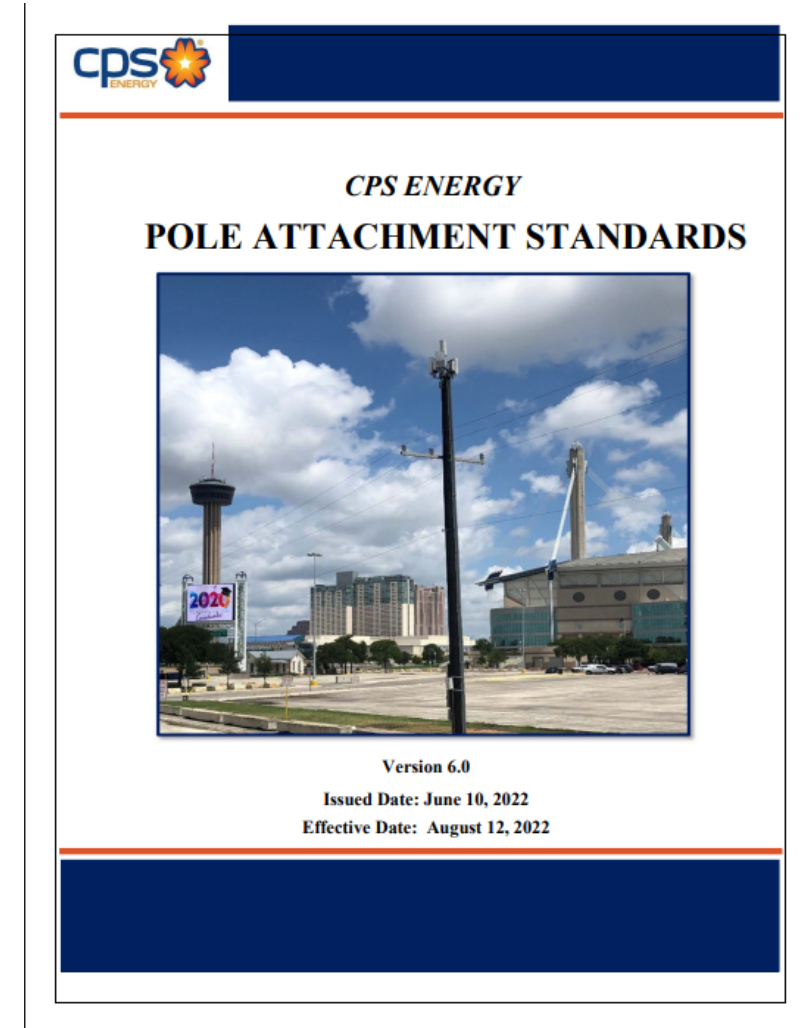
- Make sure that all new &/or replacement employees as well as contractors are trained on:
 - Pole Attachment Standards & pole attachment process
 - Electrical make ready designs to streamline the rejections
- Continue to train their employees on the importance of communication regarding worker safety zones & applicable clearances

It's the engineering contractor's responsibility to learn how to fill out the application & understand CPS Energy standards

POLE ATTACHMENT STANDARDS

VERSION 7.0

- CPS Energy is actively drafting a new version of the Pole Attachment Standards
- In September, we discussed the 5th Report and Order as well as the 4th FNPRM
 - Topics included: timeframes to attach, deadlines to pay make ready invoices, OTMR for complex work, contractor onboarding, advance notice & meet-and-confer requirements, application & make ready timeframes



Pole Attachment Standards Version 6.0

POLE INFORMATION

CLASS SIZES

- CPS Energy has modified its construction practices; only class 2 poles and above will be utilized
- Exceptions may be granted for clearance poles for electric service
- In flight work requests before T-5100 approval will need to have pole sizes modified



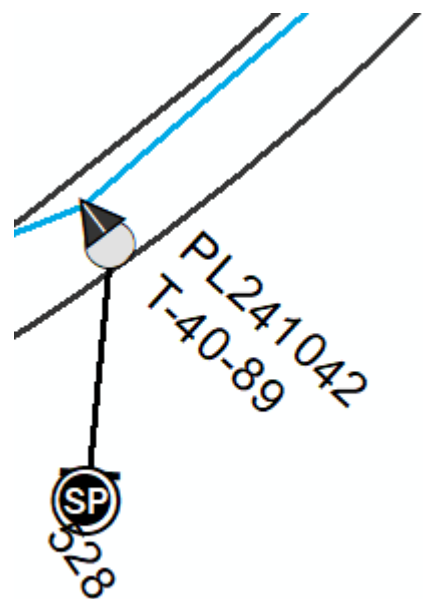
Replaced Pole

POLE INFORMATION

AT&T OWNED POLES



- **CPS Energy will no longer replace AT&T owned poles**
- It is the approved engineering firm's responsibility to check for ownership prior to submitting applications & designing electrical make ready



T-Pole Annotation

XCoord NAD	17764
YCoord NAD	59834
OWNER	AT&T
CUSTOMER	<Null>
Label Text	T-40-89

Owner Field in GIS

POLE INFORMATION

COMPOSITE POLES

- As a reminder, attaching entities are required to use banding or clamps when attaching to fiberglass poles
- This rule extends to vertical runs
- This requirement is outlined under the steel pole requirement in the pole attachment standards
 - The standards will be amended to include composite poles as well
 - This requirement was first introduced in September 2023 quarterly



Installed Composite Pole



APPLICATIONS

WIRELESS MOCKUPS

- New wireless equipment configurations require a pre-certification process
- Wireless provider must identify in writing all licensed frequencies, by FCC licensee, that will be used
 - The wireless provider will submit the reports required by Appendix D, Section B.1
- Mock representation of the proposed wireless installation must take place at the CPS Energy training grounds prior to installation in the field



Valmont Mockup



CommScope Pole

- Submitting firms need to coordinate with their EMR WR Design teams during the entire Permit Application Review Process
 - Reviewing firms identified multiple instances where the Permitting teams were not coordinating with their EMR Design teams which created confusion & issues
- Modifications to the standard CPS Energy Pole Attachment Permit Application template makes it difficult for reviewing firms to process the application
- The Standard CPS Energy Pole Attachment Application template can be found in the CPS Pole Attachment Services website

- Application missing required information
 - CPS Energy Pole number (PL#) missing on application
 - Make ready not called for on the application
 - Missing required attachments at submittal of application
- Mistakes on Pole Loading Analysis
 - **All existing violations on pole are not fixed or creates a new violation**
 - Incorrect construction grades
 - Missing cables on pole
 - Incorrect cable tensions
 - Mid-span clearance issues
- The application review shot clock will reset with every application rejection
- Contractors should NOT change the attaching entities application name on rejections, only a REV designation should be added to the end of the application name
 - Example – Tag Number-Year-Application *Number_REV#

*Needs to be a new revision number, otherwise it causes billing issues

COMMON APPLICATION ERRORS

- Pole Loading Analysis (PLA) Report(s) should include coversheet stamped by a PE, or each individual PLA Report is to be stamped
- Pole information on PLA Reports should reflect that of application height information. Pole Capacity Utilization Percentage should also match on Application & more UTD PLA Reports
- Correct wire Sizes/Types, Equipment Sizes/Types, Tensions & Ownership need to be utilized
- Anchor(s)/Downguy(s) at appropriate Lead Lengths/Attachment Heights, as shown on the application. (If applicable)
- Pole Number, Class/Height, Species & Construction Grade, shown as it exists or is proposed on the application

PLA Analysis shall be valid for no longer than six (6) months from the time of Application Submission. After six (6) months, a new PLA analysis will be required

APPLICATION TIMELINE

"QUICK FIXES"

- The 21 days 'Pause' when applications are sent back for corrections (commonly called quick fixes)
- The timeline 'Resumes' when the review firm receives the quick fix back
 - Subsequent pauses for additional quick fixes
- Applicants shall receive a consolidated review for the total application (application form, PLA, EMR, etc.)

Applications in which the design needs to be fundamentally changed (e.g. additional pole replacements) are handled as rejections.

APPLICATION TIMEFRAMES

POST CONSTRUCTION

- Attachers must inform CPS Energy/Contractors when attachment construction is completed
 - Notice is required for application closeout
 - Final permit will not be received until passing post construction inspection
- Failure to attach
 - **Attacher must install within 90 days of receiving the notice to proceed**
 - If no communication is received regarding a request for a 30-day extension, the post construction inspection will take place
 - Failure to install within the original 90 days or the additionally granted 30-day extension will result in expiration of the application
 - Attaching Entity will be required to submit a new application

- CPS Energy is running weekly reports for work requests in As-Built Status
 1. Responsible designer shall review documents attached at task 16500 for As-Builts
 2. After entering and completing the as-builts, send revision for as-built verification through GIS
 3. In ARM, at Task 17000, add supervisor initials CZ, CSTE, or PBT1
 - "Completed on 03/07/2024 submitted to Entrust/TRC by SWAY"
- If the applicable designer has left the approved engineering firm's company, it is that engineering firm's responsibility to submit
- Supervisor that completes as-built verification shall notify designer that work request is closed



DESIGNER RESPONSIBILITIES

DESIGNER RESPONSIBILITY

- The Designer is the owner of the Work Order & GIS from the creation through the As-Builts
- Make sure that the designer's initials are indicated under Work Request Owner to ensure delivery of emails as tasks are completed

Work Request Detail

General

*WR No		*WR Status	DESFN
Contact Name		Contact Phone	(999) 999 - 9999 x 99999
*WR Type	PALMR	*Classification	CAPITAL
*Address		Directional Address	
*Priority	C3	*Requested Completion Date	02/29/2024
Customer Ready Date	01/18/2024	Earliest Appointment Start	MM/DD/YYYY HH:MM
Description		Latest Appointment	MM/DD/YYYY HH:MM
*Local District	OHN	WR Owner Name	MR9
			ROBERTO MONSIV

- **EMR WR designer needs to coordinate with their internal Permitting Teams during the entire Permit Application Review Process**
 - Designers must verify if there are any overlapping WR Polygons in GIS during the design process prior to submitting the Application Package for review
 - If there are multiple WR Polygons in GIS, designer needs to coordinate with the other designer
 - Work Manager tasks need to have the appropriate Responsible Person once Work Order has been created
 - EMR WR's need to be pushed through scheduling & construction in a timely manner once they are approved

WORK MANAGER PROCESS

MAJOR TASKS

Attached Files

Remerge	Update	Refresh Date	Attachment File Name*	Description
		Nov 13, 2023	COSA_188645_20230831_extended.pdf	COSA PERMIT
		Oct 24, 2023	COSA_188645_20230831.pdf	COSA PERMIT
		Oct 24, 2023	WR#40761043 FINAL FOR CONSTRUCTION_PE Sealed.pdf	FINAL FOR CO
		Oct 06, 2023	40761043_2_202310061439_10-06-2023(14_39_35).pdf	DNU
		Jul 21, 2023	40761043_2_202307210832_7-21-2023(08_32_28).pdf	DNU

Total items: 22


Attachments for Work Request

*These are not the only attachments that would need to be attached; This is not a comprehensive list

- 2460 for Entrust- Zsofia Cassidy (CZ),
TRC- Steven Chavez Martinez (CSTE),
QUES- Brandon Perez (PBT1)
- Permit Attachments expected at task 2360*
 - Design for Review (preliminary)
 - Design for Construction (final)
 - Dig Tess (number should also be on the design)
 - Gas Maps
 - SAWS/Water Maps
 - CPS Energy Environmental forms/approvals (design notes should be in red)
- Permit attachments expected before 5000 approval
 - TXDOT approval
 - City/County approval

DESIGNER RESPONSIBILITY

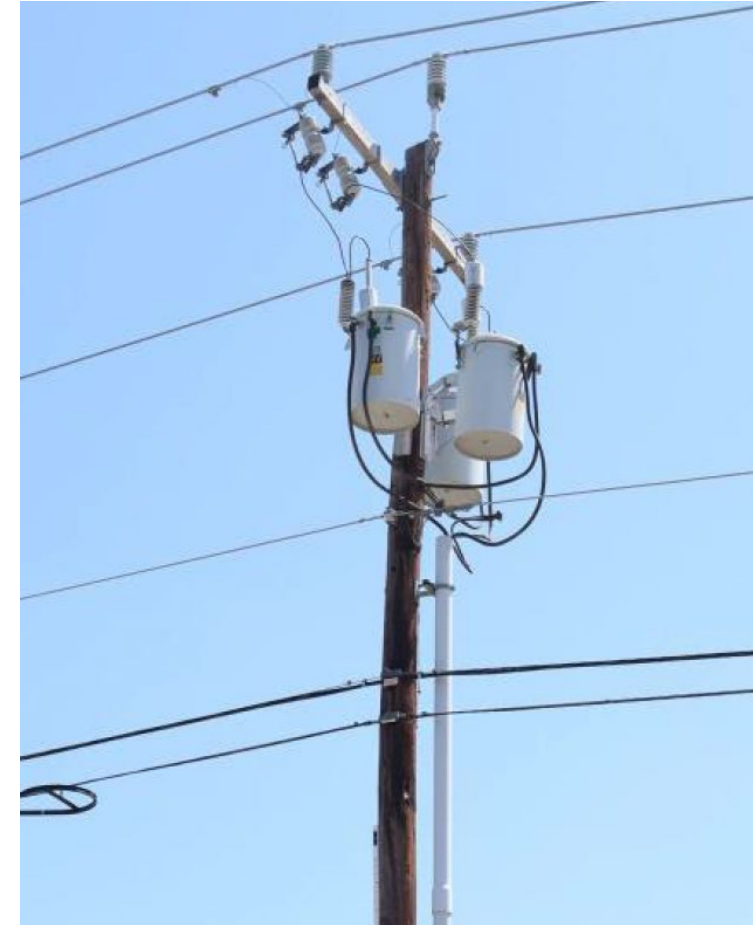
- Environmental notes from Environmental Department are required on the design
- If Required Action is checked in the EPIC sheet; then it would need to be included on the design

 Environmental Permits, Issues and Concerns (EPIC) Sheet Comply with yellow-shaded and marked "Required Action" boxes for this project		CPSE WR#(s): CPSE Foreman Name (Print): CPSE Foreman Signature and Date:
Cultural Resources: Archaeological Permitting/Monitoring No Required Action <input checked="" type="checkbox"/> Required Action <input type="checkbox"/> Under the Antiquities Code of Texas, the project has been identified as located within a culturally sensitive area. Archaeological Monitoring is required during excavation activities. Contact the on-call Archaeologist at least 48 hours/2 business days prior to excavation activities at 210-353-2579 or jbentley@cpsenergy.com . Before construction can start, confirm Archaeologist's acknowledgement of construction schedule. Archaeologist must be onsite during excavation activities.	Please follow all directions regarding conditions and permits associated with the project. Contact CPS Energy (CPSE) Environmental Department at 210-353-2551 with any questions. Stormwater: Installation of Best Management Practices (BMPs) and Soil Stabilization No Required Action <input type="checkbox"/> Required Action <input checked="" type="checkbox"/> All projects with soil disturbance require the appropriate installation and application of erosion controls/BMPs. Mulch and/or vegetation must be placed on exposed soils once work is complete in order to help prevent erosion. If a Stormwater Pollution Prevention Plan is included with the job site package, follow plan as instructed.	Asbestos Awareness: No Required Action <input checked="" type="checkbox"/> Required Action <input type="checkbox"/> All coal tar pipe coating and asphaltic pipe insulation is assumed to contain non-friable asbestos materials. The contractor must follow all requirements in OSHA 1926.1101 to protect workers when removing coating materials. The coal tar/asphaltic pipe insulation coating shall be removed using wet methods. All removed coal tar pipe coating and asphaltic pipe insulation must be gathered, contained in 6 mil polyethylene sheeting, sealed with tape, and delivered to the CPS Energy Mission Road Construction Center at 613 Mission Road, San Antonio, 78210. The requirements must be followed unless otherwise noted on the plans. Contact Storeroom for key to roll-off at 210-353-5513.
Endangered Species: Karst Invertebrates No Required Action <input type="checkbox"/> Required Action <input checked="" type="checkbox"/> Under the U.S. Fish and Wildlife Endangered Species Act, the project has been identified as located within a sensitive karst zone with potential habitat for endangered species. Crews are to immediately stop work and contact the CPSE Environmental Department at 210-353-2551 if karst (cave-like or voids) features are identified during construction activities.	Stormwater: Stormwater Pollution Prevention Plan (SWP3) No Required Action <input checked="" type="checkbox"/> Required Action <input type="checkbox"/> A SWP3 is active for this project. Please ensure the SWP3 is reviewed and BMPs are installed prior to the start of excavation activities. Contact Stormcon at 210-771-1221 or brandon@stormcon.us at least 48 hours/2 business days prior to any soil disturbance. Before construction can start, confirm Stormcon's acknowledgement of construction schedule. As soon as practical, all disturbed soil that will not be covered by impervious cover will be stabilized per applicable project specifications. Upon completion of the project, including site stabilization, all sediment and erosion control measures shall be removed (unless shared erosion controls are in place), paying attention to rock berms in drainage features. Removal of these items are required prior to issuance of final contractor payment for the project.	Contaminated Soils: Joint Base San Antonio (JBSA), Port of San Antonio, Brooks City Base, or Other Site No Required Action <input checked="" type="checkbox"/> Required Action <input type="checkbox"/> There is a potential for the excavated soil to be contaminated by activities previously conducted by JBSA/Air Force. If evidence of contamination or hydrocarbon odors are noted in soil, please contact CPSE Environmental Department at 210-353-2551. In no event should excavated soil or hydrovac spoils (water, soil mixture) be moved from the project's generation site by CPS Energy. Soils may be used to backfill excavation(s) from same project area. If there will be left over soil or hydrovac spoils, please coordinate with customer to leave at construction site where generated or contact CPSE Environmental Department to coordinate sampling, manifesting, and disposal at the landfill.
Endangered Species: Birds (Golden-cheeked warbler) No Required Action <input checked="" type="checkbox"/> Required Action <input type="checkbox"/> Under the U.S. Fish and Wildlife Endangered Species Act, the project has been identified as located within potential habitat for endangered bird species. Crews are not to trim or cut trees. If tree impacts are required, additional surveys are required. Please contact CPSE Environmental Department 210-353-2551.	Flood Plain: Regulating Entity-COSA, Bexar Co., or Medina Co., etc. No Required Action <input checked="" type="checkbox"/> Required Action <input type="checkbox"/> A flood plain development permit is active for this project. Requirements of the permit must be followed at all times. Unrestricted drainage of the project and adjacent areas must be maintained. No waste, equipment or construction materials shall be placed in existing lows that will block or alter flow of the existing natural drainage and must be removed by the end of the day. All existing ground within the 100-year flood plain, which is disturbed by construction activity, shall be restored to original grade with natural material. A copy of the flood plain permit must be kept on-site at all times.	Tree Impacts: Regulating Entity-COSA, COSA ETJ, Alamo Heights, Helotes, Shavano Park, or Hollywood Park, etc. No Required Action <input checked="" type="checkbox"/> Required Action <input type="checkbox"/> A tree permit is not required; however, in the event tree trimming is greater than 25% of a tree canopy or tree removals are required, contact the CPSE Environmental Department at 210-353-2551. please ensure that excavations are as far as possible from the trees. Avoid damaging by hand digging around the roots. Roots and branches shall be cut cleanly with a saw and wounds painted within 30 minutes with asphaltic, exterior oil, or latex based paint. All tree trimming and pruning shall be performed by a company having the required Tree Maintenance license.
	Waters of the U.S.: Soil Disturbance within a Drainage Area No Required Action <input checked="" type="checkbox"/> Required Action <input type="checkbox"/> Planned excavation will occur within the high-water mark of land identified as "Waters of the U.S." per Section 404 of the Clean Water Act. All spoils and equipment must be removed from the site at the end of the day and existing ground within the drainage way must be returned to natural grade with natural material. Maintain a copy of the Nationwide Permit Review at the project site at all times.	

- **After task 5100 is completed, designer is responsible to progress job**
- **Task 6000 – Designer: Designer is responsible for:**
 - Finalizing the design
 - Coordinates the tree trimming if needed
 - Applies for any pending ROW permits
 - Re-stakes proposed pole locations
 - Prepares for construction
- **Ensure CIAC payment has been received prior to progressing the job to scheduling/construction**

ASSOCIATED WORK REQUESTS

- All associated work requests should be submitted with the original application submission
 - Include Zach Tschoepe, ztschoepe@CPSEnergy.com, on the application submission if there is an associated UG WR
- This extends to final approvals at task 5000/5100
- All associated work requests must be paid prior to sending to task 5000/5100
 - The 5000/5100 notification email should include the associated work requests



Failure to submit all associated work requests with the project can result in delays for the applicant company.

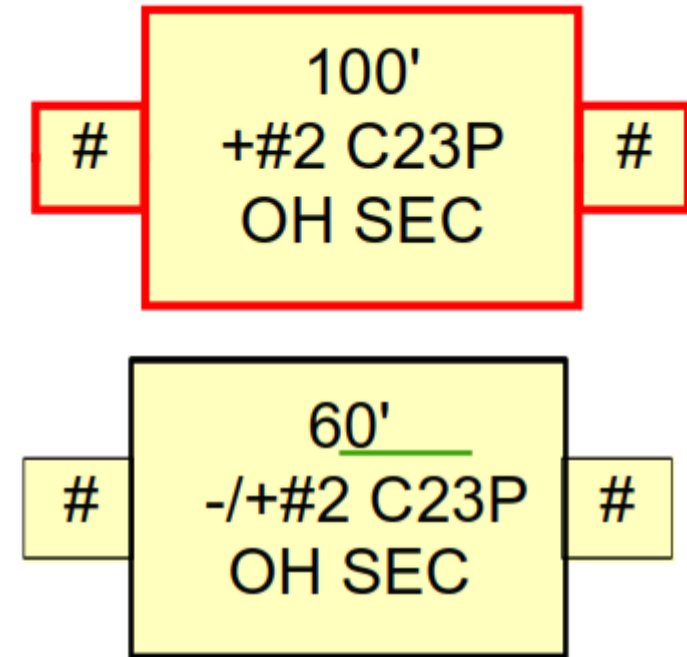
TRANSFORMER - CRANE CALLOUTS

- Call for a crane for all two and three pot bank projects regardless of size
- For a single transformer call for a crane if the unit is 50kVA or greater
- 4 NSLP per transformer



TRANSFERRING SECONDARY/SERVICE

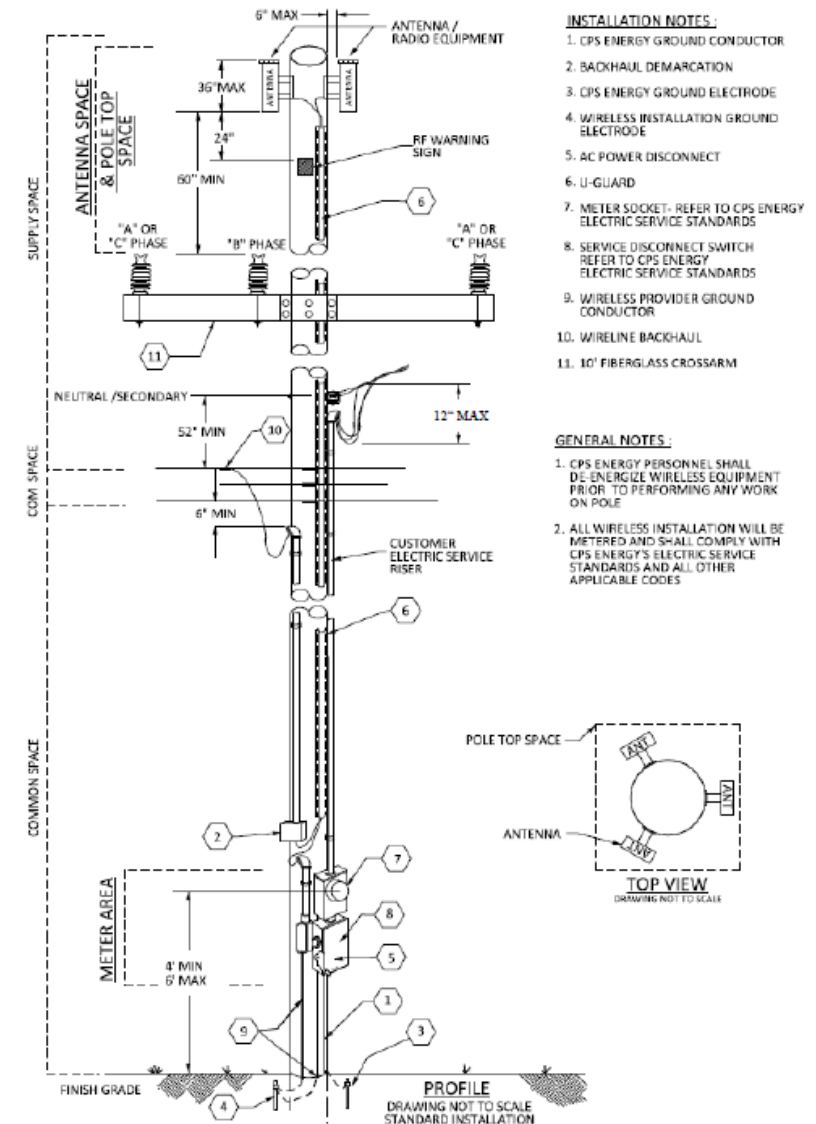
- When transferring, wire boxes are required for secondary cables
- Transferring service cables does not require wire boxes



POLE REPLACEMENTS & INSTALLATIONS

- CL16 CU required for Class 1 poles
- CL12-1,2 required for Class 2 poles
- 10' cross arm on arm for pole top antennas & bottom arm double circuit construction configuration

I3: CPS Energy Wireless Antenna Installation – Pole Top Space (Panel)

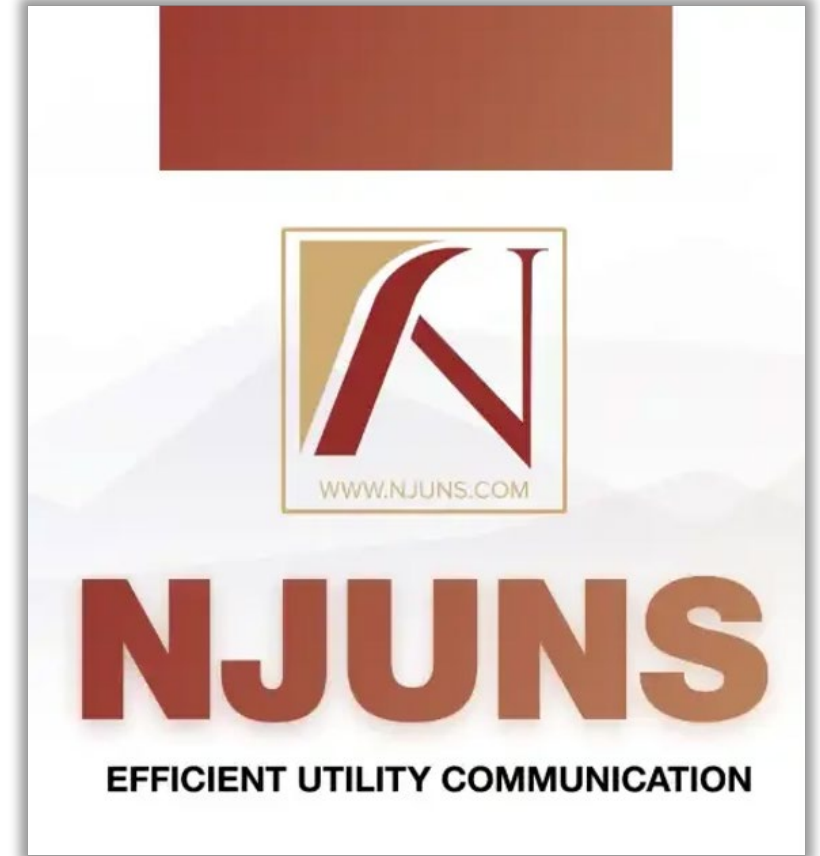




VIOLATION TICKETS

NJUNS NOTIFICATIONS

- CPS Energy utilizes different types of NJUNS notifications:
 - Pole Transfers (PT) tickets
 - Violation (VIO) tickets
 - New (New) tickets
- NJUNS training materials can be found on the training page & includes:
 - NJUNS User's guide
 - Training Videos
 - Best Practices
- **If any attaching entity needs assistance or additional training, please reach out to the Pole Attachment Services team**



National Joint Utilities Notification System

The next web-based training can be found at the [NJUNS Training page](#), where you can subscribe to receive notifications

VIOLATION TICKETS

- CPS Energy utilizes violation tickets for hazardous conditions that need to be addressed
 - LiDAR
 - Internal Reporting
 - CRU
 - City of San Antonio & suburban cities
- CPS Energy continues to stress the importance of timely transfers
 - Customer complaints
 - Safety concerns
- NJUNS registration is a requirement for **ALL** attaching entities



Telecommunication Wire Down

POLE TRANSFERS

- Pole chunks should be removed when transfers are completed
- If braces need to be moved to facilitate transfers; reach out to the PAS team



Temporary Cross Arm Brace



Pole Chunk

- Tagging Requirements For:
 - Attachments
 - Banner Attachments
 - Overlashings
 - Wireless installations
- Minimum of 95% of attachments need to be tagged



Assigned Two Digit Tag



ANNOUNCEMENTS

POLE INVENTORY PROJECT

UPDATE

- The pole attachment inventory was paused on 5/9/25
 - Concerns were raised regarding pole ownership
 - Ensure that CPS Energy is inventorying and invoicing appropriately
- Field activities are expected to resume in December or January



OSMOSE 360

INFORMATION/REGISTRATION



The Osmose 360 logo, with "Osmose" in white and "360" in a blue circle, set against a dark blue background.

Better
PREDICT, MANAGE & OPTIMIZE
your utility structures

LOG IN

[Need help?](#) [Forgot your password?](#)

[Sign in](#)

[Osmose Employee](#)

— New to Osmose 360? —

By clicking 'Create your account', you agree to the [Terms and Conditions](#) and [Privacy Policy](#)

[Create Your Account](#)

A blue icon of a location pin with a red dot.

Map View

Built on ESRI ArcGIS, the Map View tool provides structure data using geospatial maps with layering options.

A blue icon of a book with a white page.

Knowledge Base

Industry standards and knowledge, educational information, and best practices all in one location.

A blue icon of a grid of squares.

Project Dashboard

Display key performance indicators, including structure data, completion of work, and financials.

A blue icon of a classical building with columns.

Osmose University

Register for in-person training events, on-site educational seminars, and live informative webinars.

Osmose360.com
CPS0897

ANNOUNCEMENTS

- Next Quarterly Dates:
 - March 5th, 2026
 - June 4th, 2026
 - September 3rd, 2026
 - December 3rd, 2026
- Contact poleattach@cpsenergy.com to get on the list for GIS training



QUESTIONS?